

**RESOLUTION NO. 13-89**

**RESOLUTION EXPANDING RURAL SPECIAL  
IMPROVEMENT MAINTENANCE DISTRICT #658M  
(QUARTER HORSE ACRES SUBDIVISION)**

WHEREAS, pursuant to §7-12-2161(4), MCA, the Commissioners have the power of changing, by resolution, the boundaries of any maintenance district not more than once a year; and

WHEREAS the boundaries of RSID 658M have not been changed within the last year; and

WHEREAS, the Yellowstone County Board of County Commissioners created Rural Special Improvement District No. 658M on June 03, 1997, to ensure the construction of roadway improvements in Quarter Horse Acres Subdivision. The overlay to existing streets in the subdivision included work on Oklahoma Star Trail, Three Bars Trail and Old Sorrel Trail; and

WHEREAS, at the time of RSID 658M creation, a map included in the creation documents as described as Exhibit D, did not show Oklahoma Star Trail within the district boundaries, as shown in Exhibit B. The Board would like to expand the District boundaries to include Oklahoma Star Trail, as shown in Exhibit A (map) in Yellowstone County, Montana; and

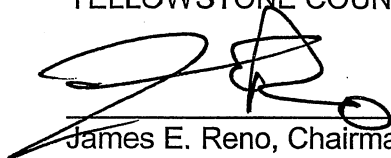
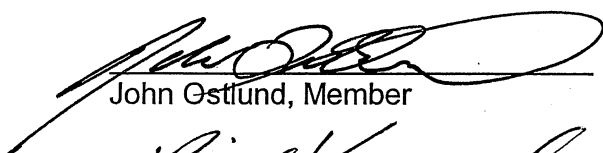
WHEREAS, the expanded boundaries of the district are shown in Exhibit A (map).

NOW, THEREFORE, BE IT RESOLVED by the Board of County Commissioners of Yellowstone County, Montana, deeming the public interest or convenience require, intends to expand the following described Rural Special Improvement Maintenance District:

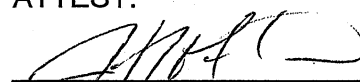
1. **DESCRIPTION OF IMPROVEMENTS, DESCRIPTION OF MAINTENANCE, METHOD OF ASSESSMENT AND ESTIMATED COSTS.** Assessments collected on behalf of this district shall be used for the maintenance, preservation, and repair of the roads located within the boundaries of this district. All of the costs of the district shall be assessed equally on a per lot method for existing and future lots. Assessments will be established annually by the Board of County Commissioners and are subject to adjustment due to cost fluctuations related to maintenance utilization levels and changes in material and labor costs of performing necessary maintenance.
2. **DURATION.** The district shall be deemed to be perpetual in nature unless absorbed and replaced by another district or municipality.

PASSED AND ADOPTED by the Board of County Commissioners of Yellowstone  
County, Montana, this 19<sup>th</sup> day of November, 2013.

BOARD OF COUNTY COMMISSIONERS  
YELLOWSTONE COUNTY, MONTANA

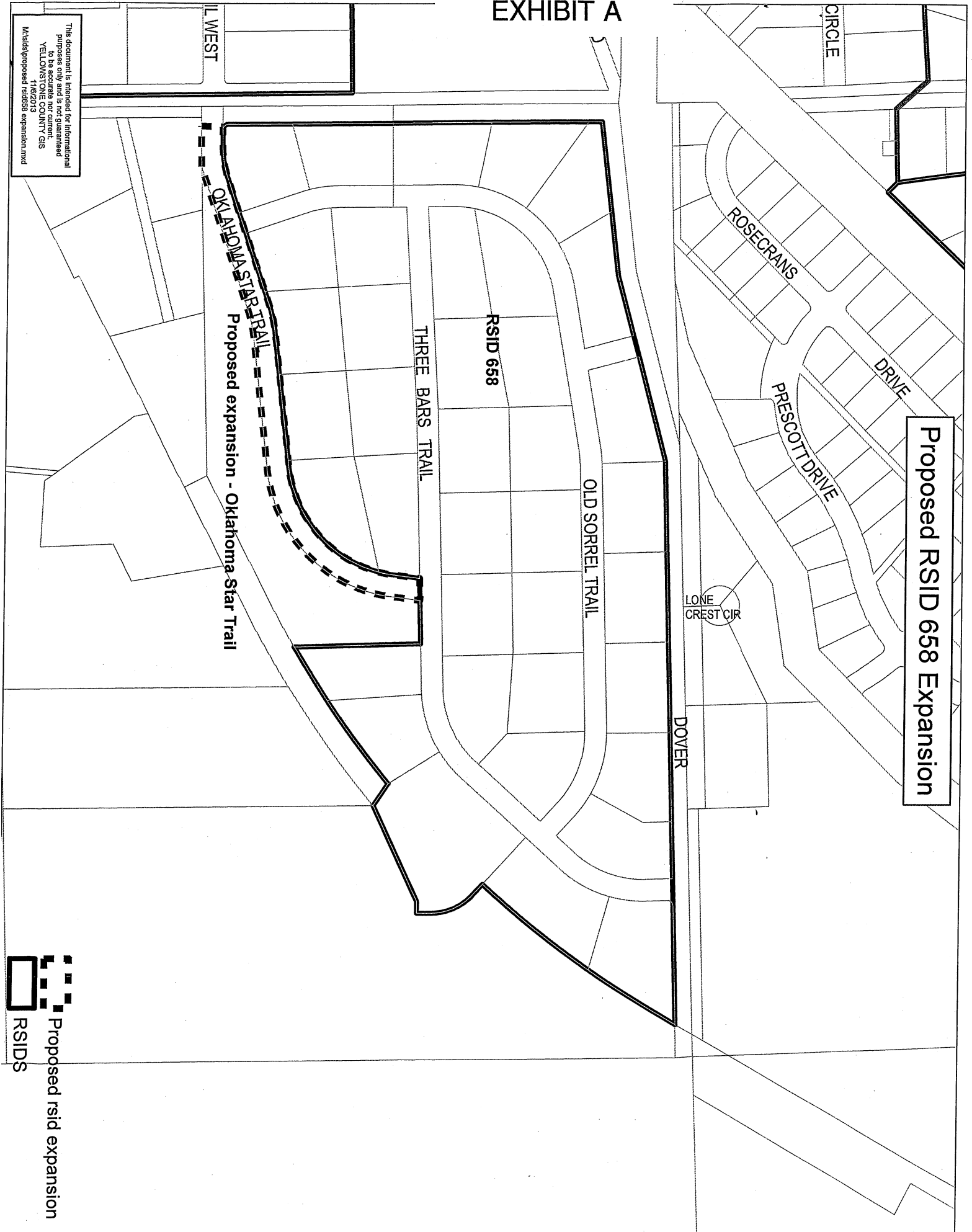
  
James E. Reno, Chairman  
John Ostlund, Member  
Bill Kennedy, Member

(SEAL)  
ATTEST:

  
Jeff Martin, Clerk & Recorder  
Yellowstone County, Montana

# EXHIBIT A

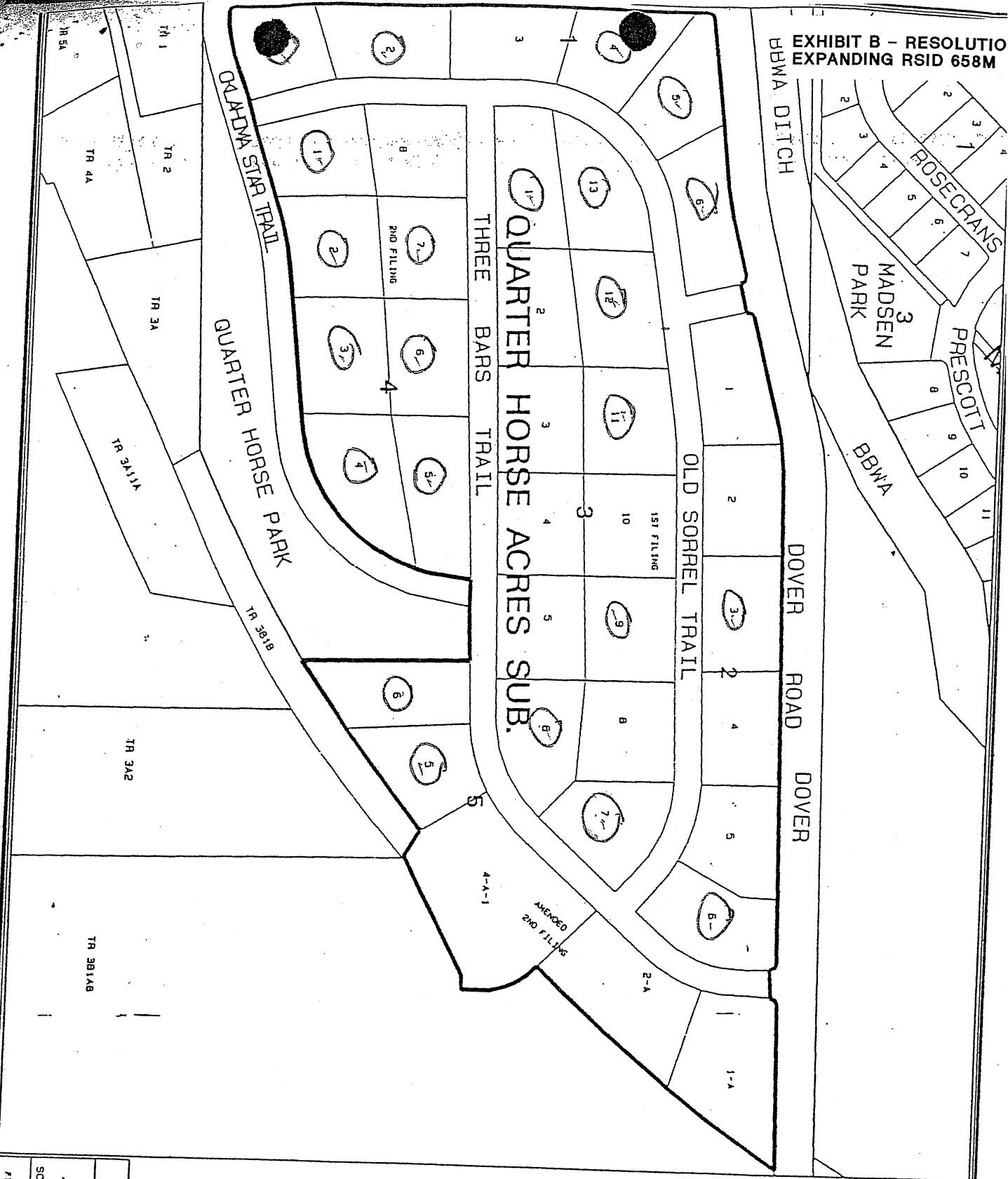
## Proposed RSID 658 Expansion



This document is intended for informational purposes only and is not guaranteed to be accurate or complete. YELLOWSTONE COUNTY GIS 11/6/2013 Msids\proposed rsid658 expansion.mxd

Proposed rsid expansion  
RSIDS

EXHIBIT B - RESOLUTION  
EXPANDING RSID 658M



This document is intended for informational purposes only. Any information on this document is not guaranteed to be accurate or current. This document may not be reproduced in any way without advanced permission from the Yellowstone County GIS management committee.

This map was plotted in Montana NAD83 State Plane Coordinates (in feet)

YELLOWSTONE COUNTY GIS  
BILLINGS, MONTANA

QUARTER HORSE ACRES SUB

SCALE: 1" = 300'

DATE: 01 Aug 96 15:15:08 Thursday

FILENAME: /user/bsmart/monita/bsm/epic-horss.plt